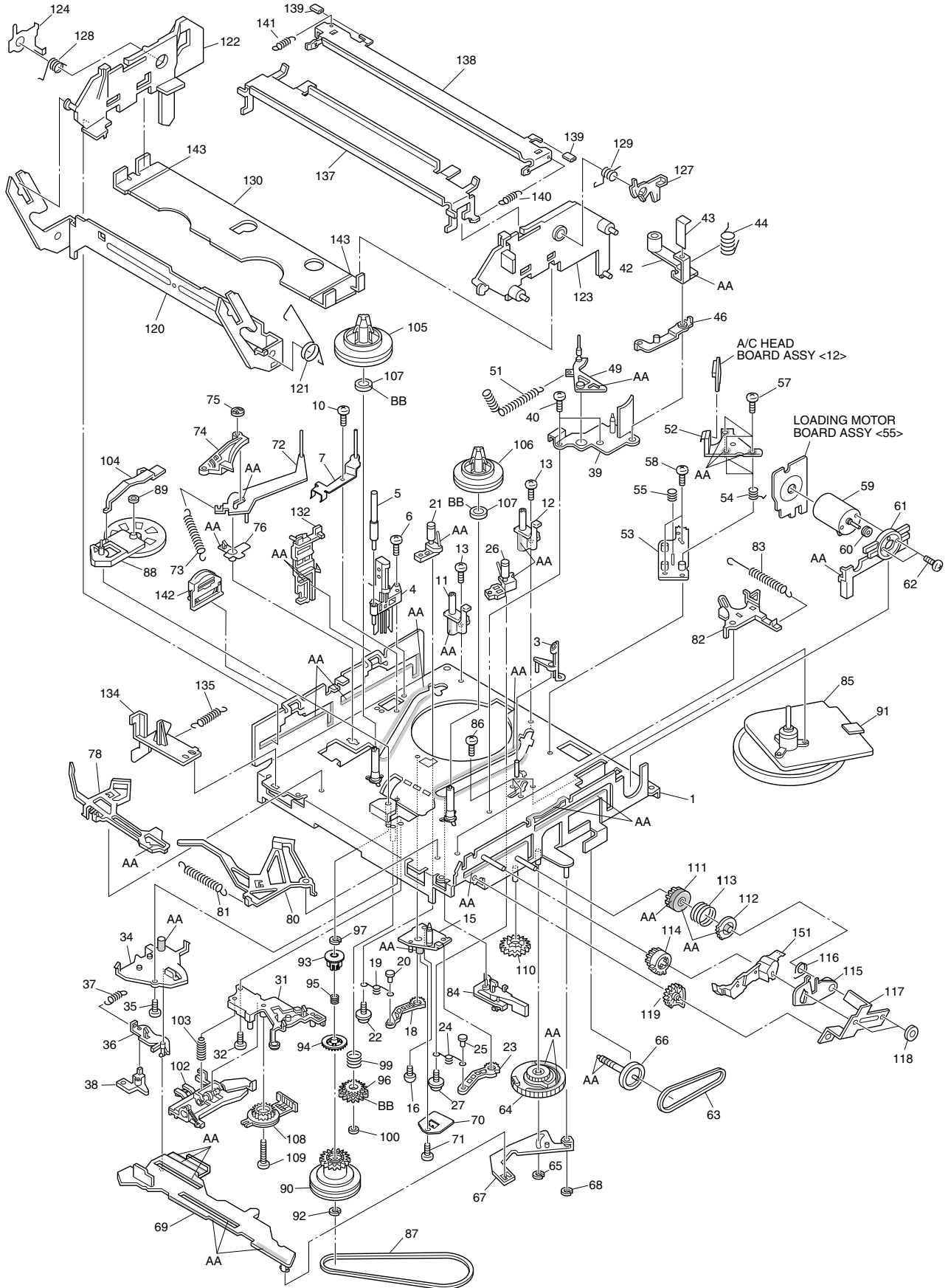


# SECTION 5 PARTS LIST

## 5.1 MECHANISM ASSEMBLY <M4>



Classification	Part No.	Symbol in drawing
Grease	KYODO-SH-P	AA
Oil	COSMO-HV56	BB

**NOTE:** The section marked in **AA** and **BB** indicate lubrication and greasing areas.

#	△ REF No.	PART No.	PART NAME, DESCRIPTION
*****			
<b>MECHANISM ASSEMBLY &lt;M4&gt;</b>			
1		LP20821-006A	MAIN DECK ASSY
3		LP30492-002B	GIDE POLE GUARD
4		NAH0001-001	FULL ERASE HEAD
5		LP40098-001B	GUIDE POLE(SUPPLY)
6		QYTDST2608Z	SCREW,FE HEAD
7		LP40637-002A	TENSION STUD BASE ASSY
10		QYTDST2606Z	SCREW
11		LP30409-002C	UV CATCHER 2
12		LP30409-002C	UV CATCHER 2
13		QYTPST2606Z	SCREW,X2
15		LP30223-003C	LOADING ARM GEAR SHAFT
16		QYTDST2606Z	SCREW
18		LP30224-001B	LOADING ARM GEAR(SUPPLY)
19		LP40099-001A	TORSION ARM
20		LP40100-001A	PIN
21		LP40101-006A	POLE BASE ASSY(SUPPLY)
22		QYSPSTG2606Z	SCREW
23		LP40103-002B	LOADING ARM GEAR(TAKE UP)
24		LP40099-001A	TORSION ARM
25		LP40100-002A	PIN
26		LP40104-006A	POLE BASE ASSY(TAKE UP)
27		QYSPSTG2606Z	SCREW
31		LP20233-004B	ROTARY ENCODER GUIDE
32		QYTPST2606Z	SCREW
34		LP30226-004E	CONTROL PLATE GUIDE
35		QYTPST2605Z	SCREW
36		LP30249-003B	TAKE UP LEVER
37		LP30003-006A	TENSION SPRING
38		LP40119-002A	TAKE UP HEAD
39		LP20234-004B	LID GUIDE
40		QYTDST2606Z	SCREW,X2
42		LP40105-003A	PINCH ROLLER ARM ASSY
43		LP40753-001A	PINCH ROLLER SHEET3
44		LP40148-002A	TORSION SPRING
46		LP40149-001C	PRESS LEVER ASSY
49		LP40106-007A	GUIDE ARM ASSY
51		LP40134-002A	TENSION SPRING
52		QAH0058-001	AC HEAD
53		LP30228-001A	HEAD BASE
54		LP30004-013A	COMPRESSION SPRING,X3
55		LP40236-001A	COMPRESSION SPRING
57		LP40213-002B	SPECIAL SCREW,X3
58		QYTDST2608Z	SCREW,X2
59		QAR0023-001	LOADING MOTOR
60		PQ43546-1-2	MOTOR PULLEY
61		LP30230-001B	MOTOR GUIDE
62		QYTPSP3003Z	SCREW,X2
63		LP30005-003A	BELT,LOADING MOTOR
64		LP20791-002D	CONTROL CAM
65		PQM30017-24	SLIT WASHER
66		LP40120-001A	WORM GEAR
67		LP40107-002A	LINK LEVER ASSY
68		PQM30017-24	SLIT WASHER
69		LP10201-003G	CONTROL PLATE
70		LP40379-001B	CONTROL BRACKET(1)
71		QYTDSF2608M	SCREW
72		LP40108-002A	TENSION ARM ASSY
73		LP30003-010A	TENSION SPRING

#	△ REF No.	PART No.	PART NAME, DESCRIPTION
74		LP40109-003D	TENSION BRAKE ASSY
75		PQ46302-1-3	ADJUST PIN
76		LP30232-002A	TENSION ARM BEARING
78		LP40532-008B	MAIN BRAKE ASSY (SUPPLY)
80		LP40111-011A	MAIN BRAKE ASSY (TAKE UP)
81		LP30003-026A	TENSION SPRING
82		LP40112-001F	SUB BRAKE ASSY(TAKE UP)
83		LP40357-002A	TENSION SPRING
84		LP40461-001A	CAPSTAN BRAKE ASSY
85		QAR0087-005	CAPSTAN MOTOR
86		QYTDSF2606M	SCREW,X3
87		LP30005-007A	BELT,CAPSTAN MOTOR
88		LP40114-012A	IDLER ARM ASSY
89		LP40599-001A	WASHER
90		LP40593-001A	CLUTCH UNIT 3
91		LP30002-097A	SPACER.CAPSTAN MOTOR
92		PQM30017-47	SLIT WASHER
93		LP30696-002A	CLUTCH GEAR 4
94		LP30697-003A	COUPLING GEAR
95		LP40554-002A	COMPRESSION SPRING
96		LP40442-001A	DIRECT GEAR
97		LP30017-019A	SPACER
99		LP40483-002A	COMPRESSION SPRING
100		LP30016-001A	SLIT WASHER
102		LP40484-001J	CHANGE LEVER ASSY
103		LP40512-002B	COMPRESSION SPRING
104		LP30236-002C	IDLER LEVER
105		LP20237-001B	REEL DISK (SUPPLY)
106		LP20238-001B	REEL DISK (TAKE UP)
107		LP30017-015A	SPACER,X2
108		QSW0554-003	ROTARY ENCODER
109		QYTPST2620Z	SCREW
110		LP30237-002B	CASSETTE GEAR
111		LP30239-002G	LIMIT GEAR(1)
112		LP30240-002G	LIMIT GEAR(2)
113		LP40136-001E	TORSION SPRING
114		LP30242-002A	RELAY GEAR
115		LP30339-002E	OPENER GUIDE
116		LP40545-001A	TORSION SPRING
117		LP40214-001B	C.H.BRACKET
118		PQM30017-47	SLIT WASHER,X2
119		LP30243-001D	DRIVE GEAR
120		LP20240-001G	DRIVE ARM
121		LP40137-001A	TORSION SPRING
122		LP10081-002L	SIDE HOLDER(L)
123		LP10082-002M	SIDE HOLDER(R)
124		LP30255-006A	LOCK LEVER(L)
127		LP30256-001H	LOCK LEVER(R)
128		LP40168-003A	TORSION SPRING(L)
129		LP40218-001B	TORSION SPRING(R)
130		LP30257-001G	CASSETTE HOLDER
132		LP30244-002G	GUIDE RAIL
134		LP30245-002F	REC SAFETY LEVE
135		LP30003-004A	TENSION SPRING
137		LP20578-001C	TOP GUIDE
138		LP30500-001C	HOLD PLATE
139		LP40450-003A	PAD,X2
140		LP30003-025B	TENSION SPRING
141		LP30003-024A	TENSION SPRING
142		LP40481-003A	ROLLER CAM ASSY
143		LP30019-014A	PAD,X2
151		LP20324-003B	DOOR OPENER